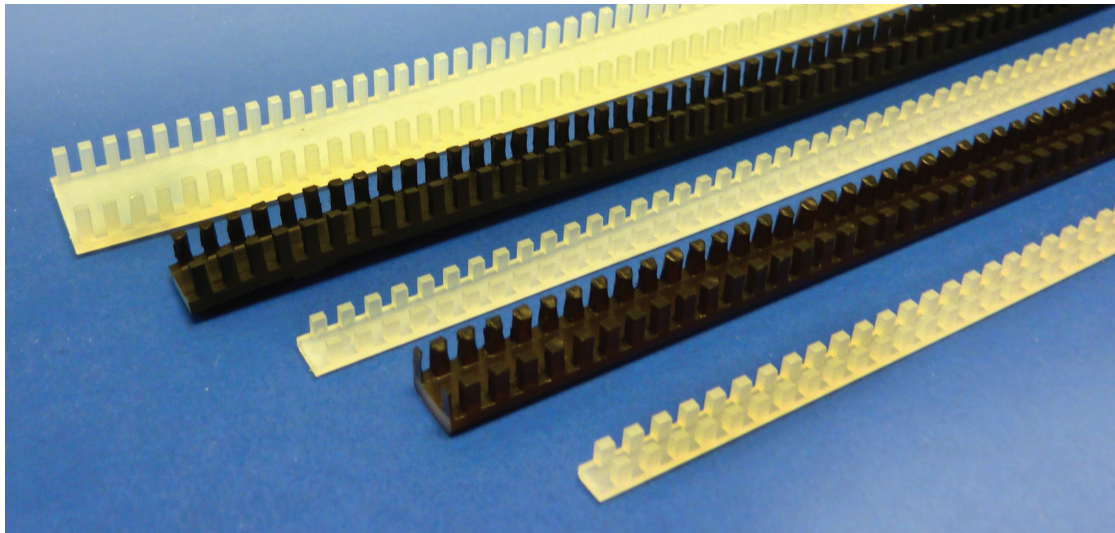


**Short Lead Time  
on Cut Sizes!**



PART NUMBER				SHEET THICKNESS RANGE
NASM	BOEING		STEPNCO	
MS21266-1(*)	BACG20Z-A	BACG20Z-M	STC 21266-1(*)	.015 - .052
MS21266-2(*)	BACG20Z-B	BACG20Z-N	STC 21266-2(*)	.052 - .085
MS21266-3(*)	BACG20Z-C	BACG20Z-P	STC 21266-3(*)	.085 - .128
MS21266-4(*)	BACG20Z-D	BACG20Z-Q	STC 21266-4(*)	.128 - .192
MS21266-5(*)	BACG20Z-E	BACG20Z-R	STC 21266-5(*)	.192 - .255
MS21266-6(*)	BACG20Z-F	BACG20Z-S	STC 21266-6(*)	.255 - .318
MS21266-7(*)	BACG20Z-G	BACG20Z-T	STC 21266-7(*)	.318 - .380
MS21266-8(*)	BACG20Z-H	BACG20Z-U	STC 21266-8(*)	.380 - .510

**Materials (\*):**

- (N) Nylon 6/6 per ASTM D4066
- (T) PTFE (Teflon) per AMS 3652 and ASTM D4895
- (F) FEP per ASTM D2116

**Boeing**

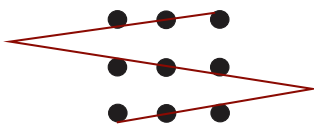
- A - H Nylon
- M - U Teflon

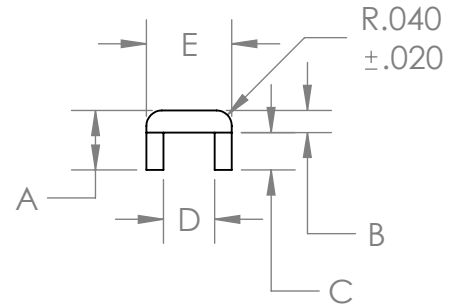
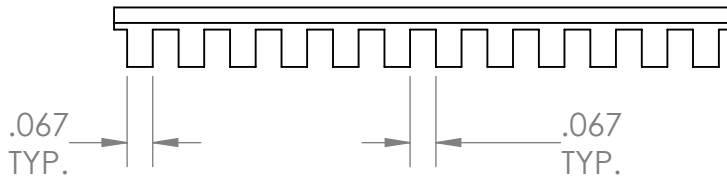
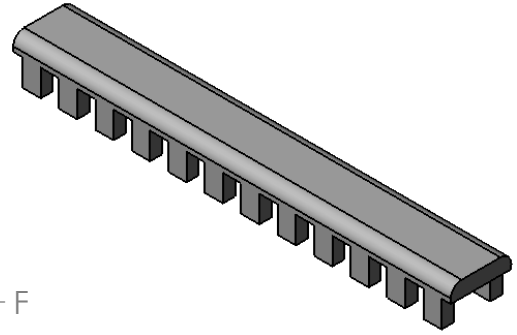
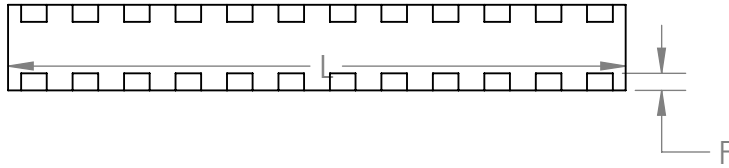
**Length:**

- Nylon – 12.75"
- Teflon - 12.75" (NASM), 19.00" (Boeing)
- FEP – 12.75"
- Bulk coils and custom cut lengths

AS9100 Rev C Certified

Teflon parts available with or without etch on Boeing and Stepnco part numbers





**TABLE 1**

<i>PART NUMBER</i>	<i>A</i> ±.010	<i>B</i> ±.010	<i>C</i> ±.0075	<i>D</i> ±.0075	<i>E</i> ±.0075	<i>F</i> ±.010	<i>FOR MATERIAL THICKNESS</i>	
-1	.155	.060	.1025	.0585	.1525	.047	.015-.052	
-2				.0925	.1775	.042	.052-.085	
-3				.1335	.2225	.044	.085-.128	
-4	.230	.075	.1625	.1975	.3275	.065	.128-.192	
-5	.240		.1725	.2625	.3875	.062	.192-.255	
-6	.255	.080	.1825	.3225	.4475			.255-.318
-7				.3925	.5175			.318-.380
-8				.5175	.6425		.380-.510	

**NOTES:**

- STANDARD LENGTH:**  
MS21266/STC 21266  
NYLON 12.750" + .000 / - .130  
TEFLON 12.750" +/- .030  
**BAGC20Z**  
NYLON 12.750" + .000 / - .130  
TEFLON 19.000" +/- .030
- CUT LENGTHS < 3.000" ± .015**  
**CUT LENGTHS > 3.000" ± .030**
- MATERIAL:**  
N - NYLON 6/6 PER ASTM D4066  
OR ASTM D6779  
T - PTFE PER AMS3656 OR AMS 3660  
TE - PTFE WITH ETCHING  
F - FEP per ASTM D2116
- TEMPERATURE:**  
H - APPLICATIONS UP TO 275°F  
T/TE - APPLICATIONS UP TO 500°F

SAMPLE STC PART NUMBER:

**STC 21266 - 1 N L**

EX. 000825 = 8.25" (FOR CUSTOM LENGTHS) OMIT FOR STD LENGTH  
MATERIAL  
SIZE FROM TABLE 1  
BASIC PART NUMBER