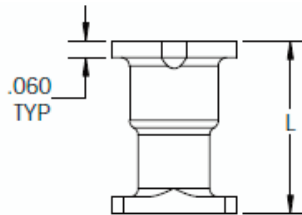
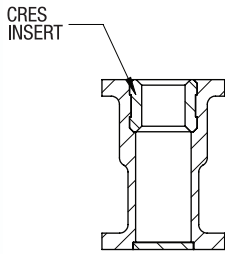
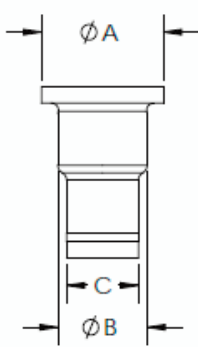
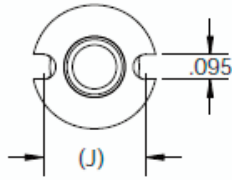


BACI12AK / STC 1836

HONEYCOMB INSERT



Material:
Ultem 30% Glass Filled

Color:
Natural

Table 1

CODE	THREAD SIZE	DIA A +.000 -.010	DIA B ±.010	C ±.010	J REF	L MIN
06	.1380-32 UNJC-3B	.451	.313	.250	.358	.217
08	.1640-32 UNJC-3B					
3	.1900-32 UNUF-3B					
4	.2500-28 UNUF-3B	.498	.375	.310	.405	.279

SAMPLE PART NUMBER

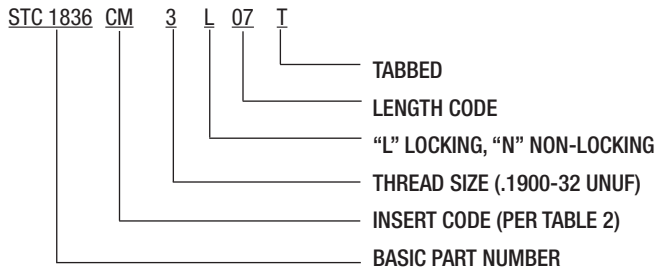


Table 2

INSERT CODE	MATERIAL	FINISH
C	CRES 303 PER AMS 5640	PASSIVATE, SOLID FILM LUBE
CM	CRES 303 PER AMS 5640	PASSIVATE

NOTES:

1. Dimension in .031 increments (example L10 X .031 = .310)
2. Passivate per AMS 2700 Type 2
3. Solid Film Lube Per AS5272 Type 1

Table 3

THREAD CODE	L CODE	APPROXIMATE WEIGHT (EA)
3	-12	0.96 GRAMS
3	-16	1.04 GRAMS
3	-24	1.18 GRAMS

SAMPLE CROSS REFERENCE

STC 1836	BACI12AK	DESCRIPTION
STC1836C06N07T	BACI12AK06C07N	CRES, .1380-32, .217 OAL, NO LOCK, TABBED
STC1836CM08L09	BACI12AK08CM09B	CRES, LUBED, .1640-32, .279 OAL, LOCKED, NO TAB
STC1836CM3L10T	BACI12AK3CM10	CRES, LUBED, .1900-32, .310 OAL, LOCKED & TABBED



17832 Gothard Street | Huntington Beach, CA 92647 | Phone: 714-362-3713
Fax: 714-362-3714 | Email: sales@stepnco.com | www.stepnco.com

